



Pinellas Public Library Cooperative

Cheryl Morales  
Executive Director  
1330 Cleveland Street  
Clearwater, FL 33755  
(727) 441-8408

---

**PPLC Board of Directors  
Agenda  
Regular Meeting  
Wednesday, February 27, 2019  
3:30 p.m.**

- |  |  |
|--|--|
| <input type="checkbox"/> Karen Roth, Chairman                  | <input type="checkbox"/> William B. Horne II                 |
| <input type="checkbox"/> Doug Lewis, Vice Chairman             | <input type="checkbox"/> Michael Jefferis                    |
| <input type="checkbox"/> Henry Schubert, Secretary & Treasurer | <input type="checkbox"/> Brian Lowack                        |
| <input type="checkbox"/> Bill Berger                           |  |
| <input type="checkbox"/> Lynne Faimalie                        | <input type="checkbox"/> LDAC Representative, Angela Pietras |
| <input type="checkbox"/> Jeffrey P. Gellermann                 | <input type="checkbox"/> Cheryl Morales, Executive Director  |

- I. Call to Order – Vice Chairman
  
- II. Roll Call – Martha Frenchek
  
- III. Minutes of Previous Meeting
  1. Minutes of Meeting, January 23, 2019
  - Approval of January 23, 2019 minutes
    - Motion:
    - Second:
  
- IV. Monthly Financial Committee Report
  1. Charles Schwab Greystoke Consulting Report – January, 2019
  2. PDR Accountants' Compilation Report - January, 2019
  
- V. Correspondence
  
- VI. LDAC Report – Angela Pietras
  1. Minutes of LDAC Meeting, November 30, 2018 and January 25, 2019.

VII. Executive Director's Report – Cheryl Morales  
1. Building/Admin  
2. Countywide Services/Member Libraries

VIII. Old Business  
1. Revised Strategic Plan format  
2. Revised DLC budget draft

IX. New Business  
1. DRAFT Auto Policy

X. Announcements/Miscellaneous

XI. Public Comments

XII. Adjournment

**The next regular board meeting:** Wednesday, March 27, 2019 at PPLC @ 3:30pm.

Deaf Literacy Center			
	Program Attendance	Total Programs	Volunteers
January 2019	1,376	165	81
January 2018	1,090	115	90

Talking Book Library			
	Total Circulation	New Patrons	Total Patrons
January 2019	13,972	47	4,540
January 2018	16,300	34	5,638

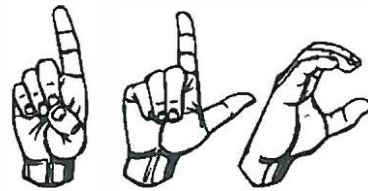
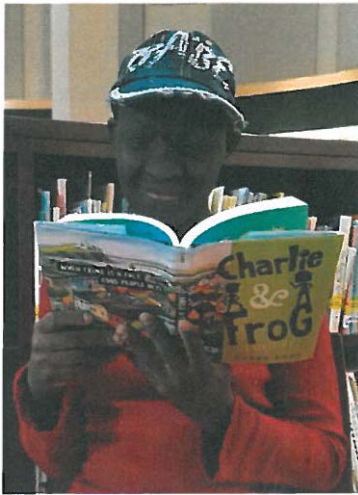
3 For Me Library Cards - FY19YTD			
New Cardholders FY18	Items Checked Out FY18	New Cardholders FY19	Items Checked Out FY19
1,783	6,017	779	3,183

## Partnerships

Museum Passes				
	Museum Visits FY18	Checkouts FY18	Checkouts FY19 YTD	Museum Visits FY19 YTD
Chihuly Collection (Launched 07.18)	385	600	736	538
Great Explorations Children's Museum (Launched 05.18)	1,637	890	640	1,019
Florida Holocaust Museum (Launched 01.18)	972	1,069	542	595
Imagine Museum (Launched 11.18)	0	0	513	637
Museum of Fine Arts	1,599	1,590	705	869

Ukulele Lending Program					
Checkouts FY18	Workshops FY18	Workshop Attendance FY18	Checkouts FY19 YTD	Workshops FY19 YTD	Workshop Attendance FY19 YTD
300	70	1,041	90	25	90

Reading With the Rays	
Program Participants FY18	Program Participants FY19
7,316	8,319



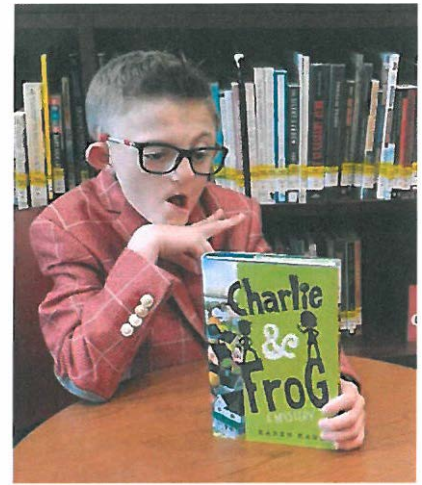
## DEAF LITERACY CENTER

a program of



Pinellas Public Library Cooperative

January 2019



January 2019 was a short month of fresh starts. This month we began 4 community ASL sessions as well as 6 baby ASL programs. After school tutoring and family mentoring sessions also resumed this month. DLC staff began planning spring programs and partnering/collaboration efforts and also conducted several outreaches at local schools, colleges and partnering agencies. Upcoming programs include: Black Deaf history month celebration, Meet Sign language interpreter and author Karen Kane (Charlie and Frog), Spring picnic and Signing Bunny tales, Optimist club Deaf/HH Speech contest, Celebrate Deaf women: The vision of you presentation by Deaf author Sofia Steitchik, and ASL book discussion.

Deaf Literacy Center Monthly Program Attendance																									
Programs	Monday				Tuesday				Wednesday				Thursday				Friday		Sat/Sun		Total				
	7	14	21	28	1	8	15	22	29	2	9	16	23	30	3	10	17	24	31						
Jan-19																									
ASL Tutoring	2	5		4	C	6	2	8	5	4	7	8	5	4	2	1	5	3	11					82	
Sign Language 1	0	15	C	12	L	8	9	18	14			25	15	15			30	25	23					209	
Sign Language 2	0	3	L	3	O	3	5	9	10			5	2	1			8	10	11					70	
Computer Tutorials	0	1	O	2	S	0	3	5	2	0	2	1	2	1	2	0	1	1	2					25	
Deaf/HH Tutoring	NC	1	S	4	E	4	5	3	5	0	3	4	2	4	NC	NC	5	4	5					49	
Basic Literacy	NC	1	E	3	D	2	3	5	2	0	3	5	2	7			2	3	2					40	
Pre GED		2	D	1		2	3	2	2	1	2	3	2	1			1	2	1					25	
Outreaches				18			22					37						8						85	
Baby ASL	25	34		22		34	79	38	39	7		43			33	38	36	37	45					510	
Individualized assist	4	22	17	6		14	22	19	5	2	11	14	24	7	2	18	5	21	23	8	5			249	
Special Programs																								0	
Family Mentoring	0	0	3	3		2	3	1	1	0	2	3	3	2	0	4	2	2	1					32	
Volunteers		3	5	2		3	6	8	5	9	1	2	8	11	2	3	5	3	2	1	2			81	
<b>Totals</b>	<b>31</b>	<b>87</b>	<b>25</b>	<b>80</b>	<b>0</b>	<b>0</b>	<b>78</b>	<b>162</b>	<b>116</b>	<b>90</b>	<b>23</b>	<b>31</b>	<b>150</b>	<b>65</b>	<b>53</b>	<b>41</b>	<b>64</b>	<b>100</b>	<b>119</b>	<b>126</b>	<b>9</b>	<b>7</b>	<b>0</b>	<b>0</b>	<b>1457</b>

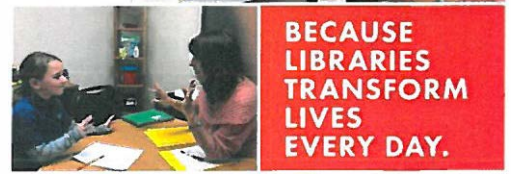
BECAUSE LIBRARIES FOSTER CURIOSITY TO PROMOTE LIFELONG LEARNING.

LIBRARIES TRANSFORM



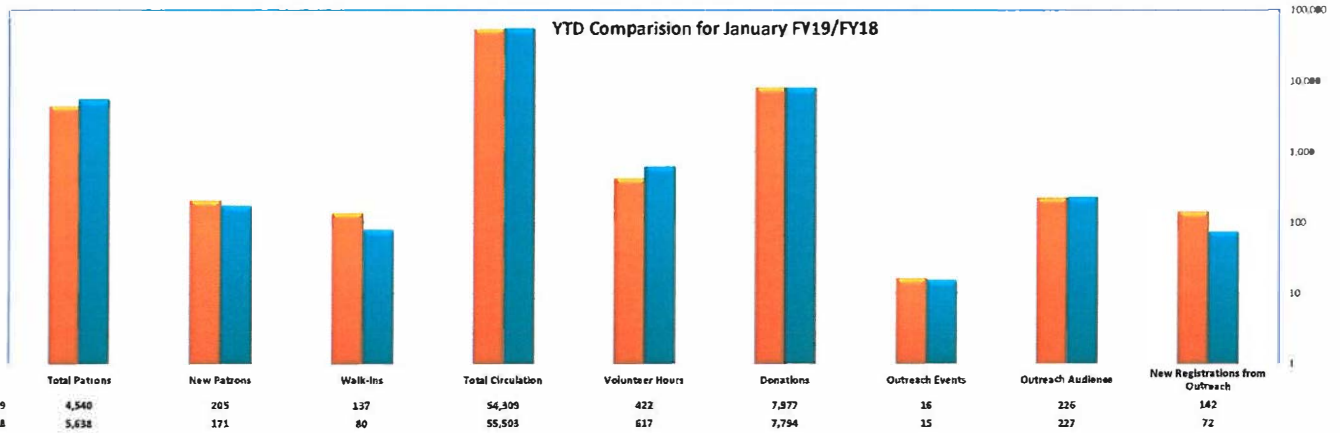
Deaf Literacy Center  
 101 2nd St N Safety Harbor, FL 34695  
 727-724-1525 ext. 4120 \* [www.pplc.us/dlc](http://www.pplc.us/dlc)

"A bridge to the world of information"



The Deaf Literacy Center is a library-based literacy program for Deaf individuals and their families. We provide Basic English literacy and in-home family literacy instruction as well as quality library and information services to the Pinellas County Deaf community.

Talking Book Library Statistics October 2018- September 2019 (FY19)														
Library Usage	FY 18	Oct	Nov	Dec	Jan	Feb	March	April	May	June	July	Aug	Sept	Total
Total Patrons	4,346	4,415	4,452	4,489	4,540									4,540
New Patrons	713	74	47	37	47									205
Walk-ins	257	26	38	34	39									137
Phone Calls	7,748	669	640	532	607									2,448
Total Circulation	160,689	12,927	15,563	12,027	13,792	0	0	0	0	0	0	0	0	54,309
Digital Book Circulation	130,319	10,499	13,072	9,418	10,945									43,934
BARD (Downloaded books)	29,395	2,263	2,293	2,436	2,545									9,537
Circulation of other formats	161	5	4	4	6									19
Interlibrary Loan	814	160	194	169	296									819
Digital Book Copies	73,731	75,990	76,484	76,593	77,523									306,590
Items in other formats	975	975	975	975	975									975
Volunteer Hours	1,734	122	111	110	79									422
Donations	\$10,782.22	\$3,047.25	\$2,054.00	\$2,770.00	\$106.00									\$7,977.25
Outreach	FY 18	Oct	Nov	Dec	Jan	Feb	March	April	May	June	July	Aug	Sept	Total
Events	46	8	1	2	5									16
Audience	610	64	45	23	94									226
New registrations	371	46	22	23	51									142



Data extracted from: Florida Division of Blind Services' Bureau of Braille and Talking Books Library ILS: KLAS (02.04.19)